



Preface

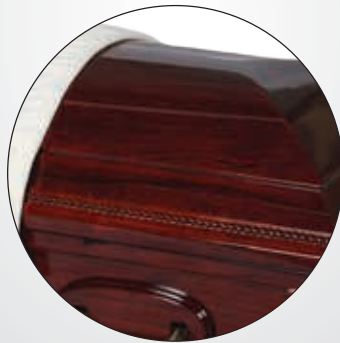
NULOGIC PRODUCTS INC. introduces the absolute highest VALUE in caskets today. Established in 2015, our revolutionary line of solid wood, veneer, and steel caskets fill a void within the current casket market. Our products reflect traditional quality and innovative design at unbeatable price points. All products come standard with adjustable mattresses and all steel products have a unique 3-way tilting bed. At NULOGIC, we have only partnered with established and respected funeral product suppliers to ensure that our product quality is matched only with great service and timely delivery. NULOGIC products can help your bottom line while providing your families with the dignity they deserve. We welcome you to consider the new, logical choice in casket selection.

THE NULOGIC TEAM

NL01 Westminster
Solid Mahogany
Velvet Bun Tufted



Velvet interior upgrade standard
no extra charge.



Beautifully finished solid wood with
3 layers of varnish.



Detailed appointments. Extra screws
in handles prevent twisting.

Westminster

Solid Mahogany
Sangria High Gloss Finish
Almond Velvet Interior
Swingbar Handles
Memorial Record Cylinder
Lock System
Adjustable Bed Mattress

Inside Dimensions:
79 L x 24 W
Outer Shell:
82 7/8 L x 28 W x 23 7/8 H
Weight: 190 lbs.



NL02 McCormick
Solid Poplar
Rosetan Crepe Sunburst



Rosetan crepe interior



Beautifully finished solid wood with
3 layers of varnish.



Detailed appointments. Extra screws
in handles prevent twisting

McCormick

Solid Poplar
Satin Walnut Finish
Rosetan Crepe Interior
Swingbar Handles
Memorial Record Cylinder
Lock System
Adjustable Bed Mattress

Inside Dimensions:
79 L x 24 W
Outer Shell:
82 7/8 L x 28 W x 23 7/8 H
Weight: 110 lbs.



NL03 Summerville
Solid Mahogany
Almond Velvet Bun Tufted



Velvet interior upgrade standard
no extra charge.



Beautifully finished solid wood with
3 layers of varnish.



Detailed appointments. Extra screws
in handles prevent twisting.

Summerville

Solid Mahogany
Satin Walnut Finish
Almond Velvet Interior
Swingbar Handles
Memorial Record Cylinder
Lock System
Adjustable Bed Mattress

Inside Dimensions:
79 L x 24 W
Outer Shell:
82 7/8 L x 28 W x 23 7/8 H
Weight: 190 lbs.



NL04 Remington
Solid Mahogany
Eggshell Velvet



Velvet interior upgrade standard
no extra charge.



Beautifully finished solid wood with
3 layers of varnish.



Detailed appointments. Extra screws
in handles prevent twisting.

Remington

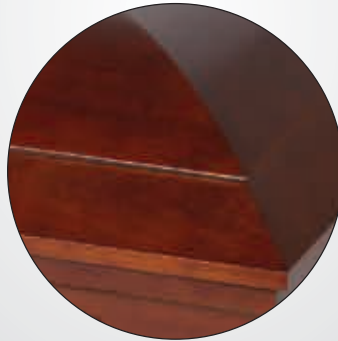
- Solid Mahogany
- High Gloss Deep Mahogany Finish
- Tailored Eggshell Velvet Interior
- Swingbar Handles
- Poly Seal Liner
- Memorial Record Cylinder
- Lock System
- Adjustable Bed Mattress

- Inside Dimensions:
79 L x 24 W
- Outer Shell:
82 L x 28 W x 23 1/4 H
- Weight: 170 lbs.

NL05 Stouffer
Poplar Veneer
White Crepe



Soft white crepe interior.



Beautifully finished solid wood with
3 layers of varnish.



Detailed appointments. Extra screws
in handles prevent twisting.

Stouffer

Veneer Poplar
Satin Cherry Finish
Soft White Crepe Interior
Swingbar Handles
Brass Appointments
Poly Seal Liner
Adjustable Bed Mattress

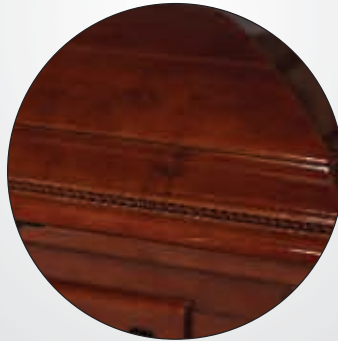
Inside Dimensions:
77 1/2 L x 24 1/8 W
Outer Shell:
81 7/8 L x 28 1/4 W x 23 1/4 H
Weight: 130 lbs.



NL06 Hilton
Solid Poplar
Eggshell Velvet



Velvet interior upgrade standard
no extra charge.



Beautifully finished solid wood with
3 layers of varnish.



Detailed appointments. Extra screws
in handles prevent twisting.

Hilton

Solid Poplar
High Gloss Cherry Finish
Eggshell Velvet Interior
Elegantly Carved Wood Details
Brass Appointments
Memorial Record Cylinder
Decorative Corner Columns
Elegant Wood Trim
Poly Seal Liner
Adjustable Bed Mattress

Inside Dimensions:
78 L x 24 W
Outer Shell:
82 L x 28 W x 23 1/4 H
Weight: 160 lbs.



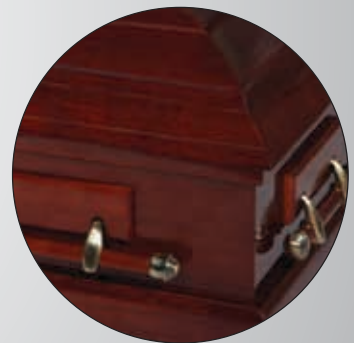
NL07 Monon
Mahogany Veneer
Almond Velvet



Velvet interior upgrade standard
no extra charge.



Beautifully finished wood veneer
with 3 layers of varnish.



Detailed appointments. Extra screws
in handles prevent twisting.

Monon

Mahogany Veneer
High Gloss Mahogany Finish
Almond Velvet Interior
Swingbar Handles
Memorial Record Cylinder
Lock System
Adjustable Bed Mattress

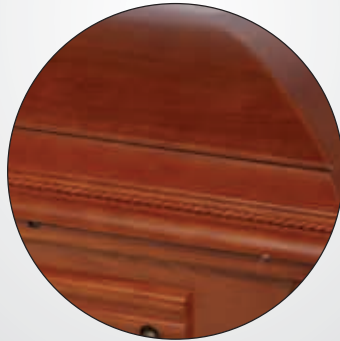
Inside Dimensions:
79 L x 24 W
Outer Shell:
81 7/8 L x 28 3/8 W x 23 7/8 H
Weight: 180 lbs.



NL08 Hector
Oak Veneer
Almond Velvet



Velvet interior upgrade standard
no extra charge.



Beautifully finished wood veneer
with 3 layers of varnish.



Detailed appointments. Extra screws
in handles prevent twisting.

Hector

Oak Veneer
Satin Cherry Finish
Almond Velvet Interior
Swingbar Handles
Brass Appointments
Poly Seal Liner
Adjustable Bed Mattress

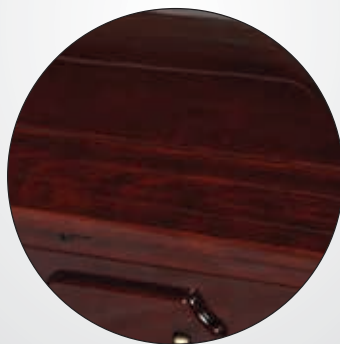
Inside Dimensions:
77.5 L x 24 W
Outer Shell:
83 1/4 L x 28 3/4 W x 23 1/4 H
Weight: 210 lbs.



NL09 Pendent
Solid Poplar
White Velvet Bun Tufted



Velvet interior upgrade standard
no extra charge.



Beautifully finished solid wood with
3 layers of varnish.



Detailed appointments. Extra screws
in handles prevent twisting.

Pendent

Solid Poplar
High Gloss Mahogany Finish
White Velvet Interior
Swingbar Handles
Brass Appointments
Poly Seal Liner
Adjustable Bed Mattress

Inside Dimensions:
77 1/4 L x 23 3/4 W
Outer Shell:
83 1/4 L x 28 3/4 W x 23 1/4 H
Weight: 160 lbs.



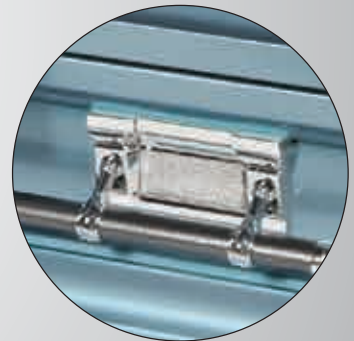
NL10 Monarch
18 Gauge Steel
Blue Velvet



Velvet interior upgrade standard no extra charge. Detailed embroidery on interior cap panel



ISO certified quality paint finish base coat plus (3) clear coats. Import manufacturer GM approved supplier.



Detailed appointments. Reinforced handles (Inside steel plate behind all handles).

Monarch

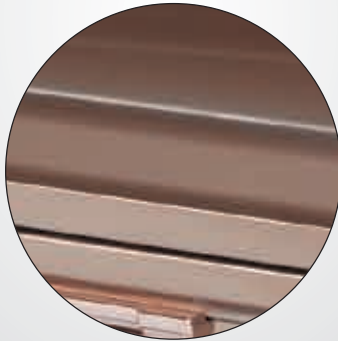
18 Gauge
Monarch Blue, Shaded Spruce Blue Finish
Blue Velvet Interior
Round Shell, Swingbar Handles
Memorial Record Cylinder
Lock System,
One Piece Rubber Gasket
Adjustable Bed Mattress

Inside Dimensions:
79 L x 24 W
Outer Shell:
82 7/8 L x 26 W x 26 H
Weight: 190 lbs.

NL11 Silver Rose
18 Gauge Steel
Pink Velvet



Velvet interior upgrade standard no extra charge. Detailed embroidery on interior cap panel.



ISO certified quality paint finish base coat plus (3) clear coats. Import manufacturer GM approved supplier.



Detailed appointments. Reinforced handles (Inside steel plate behind all handles).

Silver Rose

18 Gauge
Silver Rose Shaded Platinum Finish
Pink Velvet Interior
Round Shell, Swingbar Handles
Memorial Record Cylinder
Lock System,
One Piece Rubber Gasket
Adjustable Bed Mattress

Inside Dimensions:
79 L x 24 W
Outer Shell:
82 7/8 L x 28 W x 23 7/8 H
Weight: 190 lbs.



NL12 Sheffield
 18 Gauge Steel
 Rosetan Crepe Sunburst



Rosetan Crepe Interior.
 Sunburst style cap panel.



ISO certified quality paint finish base coat plus (3) clear coats. Import manufacturer GM approved supplier.



Detailed appointments.
 Reinforced handles(Inside steel plate behind all handles).

Sheffield

18 Gauge
 Grecian Finish
 Rosetan Crepe Interior, Sunburst Style
 Square Shell, Swingbar Handles
 Memorial Record Cylinder
 Lock System,
 One Piece Rubber Gasket
 Adjustable Bed Mattress

Inside Dimensions:
 79 L x 24 W
 Outer Shell:
 82 7/8 L x 28 W x 23 7/8 H
 Weight: 190 lbs.



1.800.461.1428 • www.northerncasket.com/nulogic